

FAHER E-ARRAS

Essential Settings :

Step 1 to 3 must be completed to ensure proper operation.

1) First methode pairing

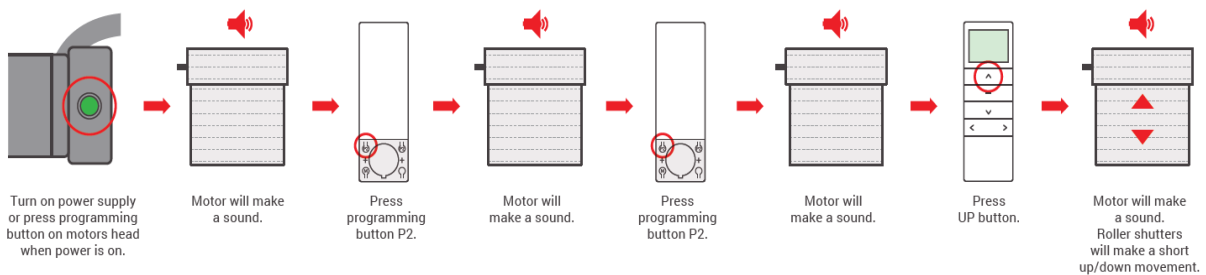


If on the right press the P2 —P2—UP button



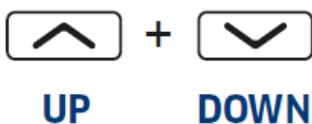
If on the left press the P2 —P2 —DOWN button.

2) Second methode pairing



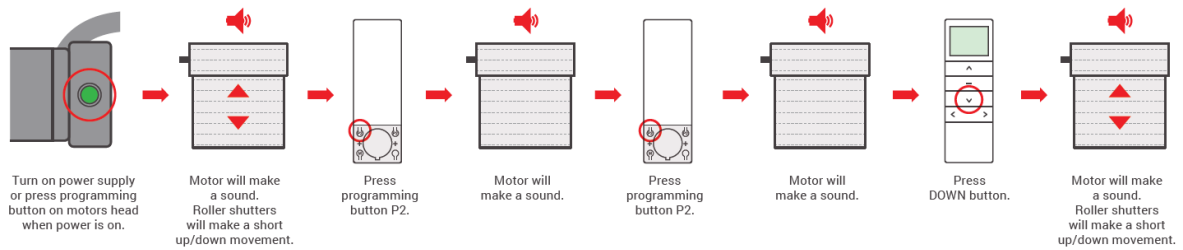
3) Switch Rotating Direction 1 METHOD

Press UP and DOWN motor runs downwards, try below to switch direction

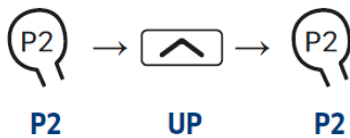


Press and hold **UP** and **DOWN** buttons simultaneously for 2 s, motor jog once, the direction has been switched successfully.

4) Switch Rotating Direction 2 METHOD

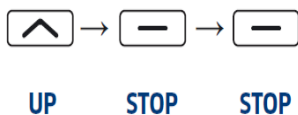


5) Programming limit positions



Press **P2** (1 beep and 1 jog), **UP** (1 beep and 1 jog), and **P2** (3 beeps and 1 jog), motor is ready for limit settings.

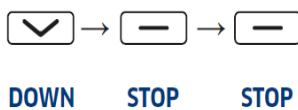
Set upper limit



Press **UP**, operate the motor to desired upper position, press **STOP** once, then press and hold **STOP** for 5 s (3 beeps and 1 jog), upper limit is set.

Hold **STOP** or press **STOP** 5 times until the engine approves the command

Set lower limit

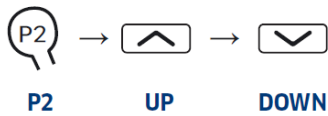


Press **DOWN**, operate the motor to desired lower position, press **STOP** once, then press and hold **STOP** for 5 s (3 beeps and 1 jog), lower limit is set.

Hold **STOP** or press **STOP** 5 times until the engine approves the command

If the engine works in jump mode after setting the end positions, see point 6

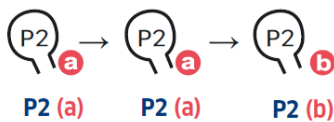
6) Activate / Deactivate Jog / Tilt Mode



Press **P2** (1 beep and 1 jog), **UP** (1 beep and 1 jog),
DOWN (make a long noise and 1 jog), Jog / tilt mode is deactivate.
If motor beep 3 times and jogs 3 times, Jog / tilt mode is activated.

* Press **UP** or **DOWN** for more than 2 s, the motor continues run;
It must be done after setting the upper limit and the lower limit;
Close the jog & tilt function, the motor running continuously.

7) Pair Additional Emitter

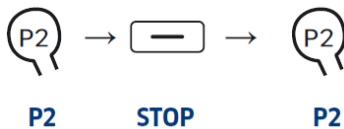


Press **P2** (1 beep and 1 jog) and **P2** (1 beep and 1 jog) on existing
emitter, press **P2** on new emitter to add (3 beeps and 1 jog),
new emitter is paired to the motor.

• Repeat same procedure will unpair additional emitter.

* (a) as existing emitter, (b) as new emitter to pair/unpair.

8) Remove All Emitters



Press **P2** (1 beep and 1 jog), **STOP** (1 beep and 1 jog), and **P2**
(3 beeps and 1 jog),
all settings are deleted.

*After deleting all emitters, keep the original limit information.

9) Deleting All Limits



Press **P2** (1 beep and 1 jog), **DOWN** (1 beep and 1 jog), and **P2**
(3 beeps and 1 jog),
all limits are removed.

QUICK INDEX

Settings	Steps	
Pairing	P2 → P2 → UP	
Switch Rotating Direction	UP + DOWN (hold down 2 s)	
Upper and Lower Limits Setting	Initiate limit setting	P2 → UP → P2
	Set upper limit	UP → STOP → STOP (hold down 5 s)
	Set lower limit	DOWN → STOP → STOP (hold down 5 s)
Adjust Limits	Adjusting the upper limit position	UP → UP + DOWN (hold down 5 s) → UP or DOWN → STOP (hold down 5 s)
	Adjusting the lower limit position	DOWN → UP + DOWN (hold down 5 s) → UP or DOWN → STOP (hold down 5 s)
Activate / Deactivate Jog / Tilt Mode	P2 → UP → DOWN	
Pair / Unpair Additional Emitter	P2 (a) → P2 (a) → P2 (b)	
Remove All Emitters	P2 → STOP → P2	
Delete All Limits	P2 → DOWN → P2	
Adding Wind-sun Sensor	P2 (a) → P2 (a) → P2 (wind-sun sensor)	
Enable / Disable Sun Detection	Enable sun detection	UP + STOP
	Disable sun detection	DOWN + STOP